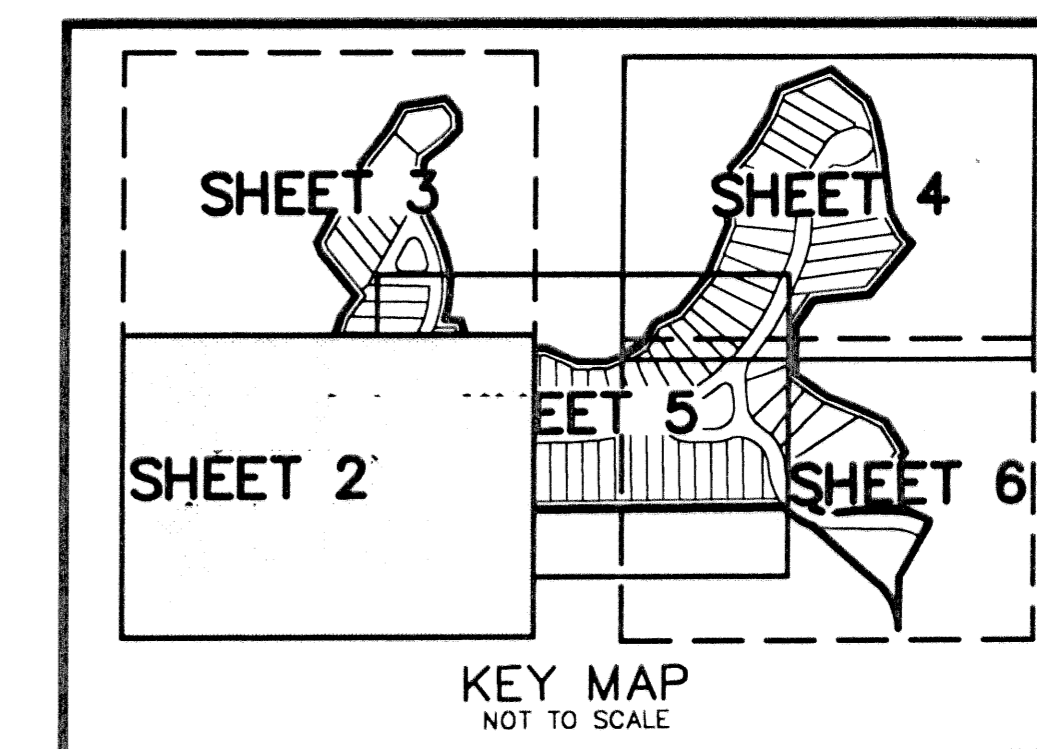


IBIS GOLF AND COUNTRY CLUB PLAT NO. 33

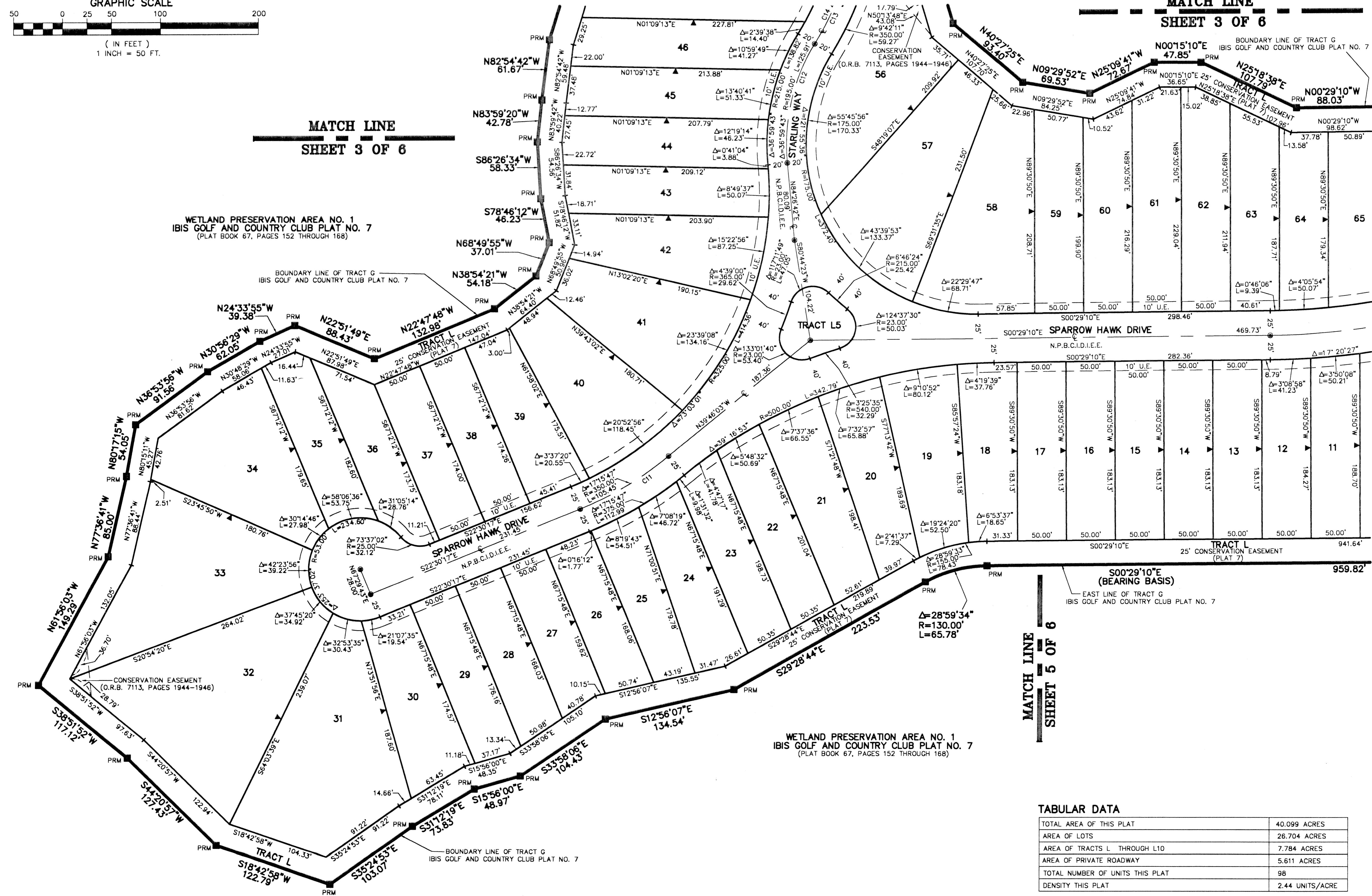
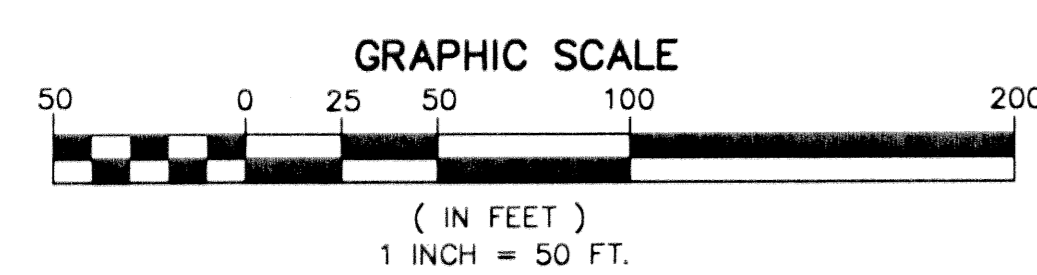
A PLANNED UNIT DEVELOPMENT
 BEING A REPLAT OF ALL OF TRACT G, AND A PORTION OF TRACT H, IBIS GOLF AND COUNTRY CLUB
 PLAT NO. 7, AS RECORDED IN PLAT BOOK 67, PAGES 152 THROUGH 168,
 LYING IN SECTION 36, TOWNSHIP 42 SOUTH, RANGE 41 EAST,
 CITY OF WEST PALM BEACH, PALM BEACH COUNTY, FLORIDA

PREPARED BY
 DAVID P. LINDLEY
 OF
CAULFIELD and WHEELER, INC.
 ENGINEERS - PLANNERS - SURVEYORS
 7301-A WEST PALMETTO PARK ROAD, SUITE 100A
 BOCA RATON, FLORIDA 33433 - (561)392-1991
 OCTOBER - 2002



121

STATE OF FLORIDA
 COUNTY OF PALM BEACH
 THIS PLAT WAS FILED FOR
 RECORD AT _____ M.
 THIS _____ DAY OF _____
 A.D. 2003 AND DULY RECORDED
 IN PLAT BOOK _____ ON
 PAGES _____ AND _____
 DOROTHY H. WILKEN
 BY: _____
 DEPUTY CLERK



MATCH LINE
 SHEET 3 OF 6

MATCH LINE
 SHEET 3 OF 6

MATCH LINE
 SHEET 5 OF 6

WETLAND PRESERVATION AREA NO. 1
 IBIS GOLF AND COUNTRY CLUB PLAT NO. 7
 (PLAT BOOK 67, PAGES 152 THROUGH 168)

WETLAND PRESERVATION AREA NO. 1
 IBIS GOLF AND COUNTRY CLUB PLAT NO. 7
 (PLAT BOOK 67, PAGES 152 THROUGH 168)

CHORD BEARING TABLE

CURVE NO.	CHORD BEARING	CHORD DISTANCE
C1	S14°41'32"W	96.28'
C2	S44°14'56"W	240.85'
C3	S61°48'26"W	109.30'
C4	S30°29'43"E	75.02'
C5	N77°17'02"W	43.30'
C6	S11°39'26"E	280.92'
C7	N34°39'17"W	297.18'
C8	N57°04'09"W	266.43'
C9	N77°50'59"W	106.18'
C10	N73°34'28"W	99.94'
C11	S31°08'10"E	105.05'
C12	N77°03'26"W	123.73'
C13	N87°36'11"W	320.41'
C14	N76°40'55"W	205.29'
C15	S74°16'29"W	125.04'
C16	S18°22'00"W	48.47'
C17	N47°16'30"W	109.33'
C18	N34°04'18"W	802.11'

TABULAR DATA

TOTAL AREA OF THIS PLAT	40.099 ACRES
AREA OF LOTS	26.704 ACRES
AREA OF TRACTS L THROUGH L10	7.784 ACRES
AREA OF PRIVATE ROADWAY	5.611 ACRES
TOTAL NUMBER OF UNITS THIS PLAT	98
DENSITY THIS PLAT	2.44 UNITS/ACRE